



A60 – A76

STOFFE | FABRICS



A60



A61



A63



A70



A71



A73

ZUSAMMENSETZUNG: 100% Polyacryl
 GEWICHT: 465 g pro lfd. Meter (+/- 5%)
 SCHEUERFESTIGKEIT: 30.000 Scheuertouren (Martindale)

COMPOSITION: 100% Polyacrylics
 WEIGHT: 465 g per linear meter (+/- 5%)
 ABRASION RESISTANCE: 30.000 cycles (Martindale)

COMPOSITION: 100% polyacrylique
 POIDS: 465 g par mètre courant (+/- 5%)
 RÉSISTANCE À L'ABRASION: 30.000 Tours (Martindale)

COMPOSIZIONE: 100% Polyacrylico
 PESO: 465 g / metri lineari (+/- 5%)
 RESISTENZA ALL' ABRASIONE: 30.000 cicli (Martindale)

SAMENSTELLING: 100% Polyacryl
 GEWICHT: 465 g per strekkende meter (+/- 5%)
 SCHUURVASTHEID: 30.000 Draaitouren (Martindale)

СОСТАВ: 100% полиакрил
 ВЕС: 465 г г.г пог.м. (+/- 5%)
 СТОЙКОСТЬ К СТИРАНИЮ: 30.000 удвоенных циклов

A80 – A82 | AF0 – AF8

STOFFE | FABRICS



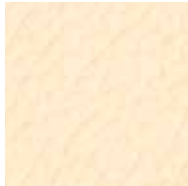
A80



A82



AF0



AF2



AF4



AF7



AF8

ZUSAMMENSETZUNG: Rind-Nappa Leder
SCHEUERFESTIGKEIT: 30.000 Knickungen

COMPOSITION: Cowhide-Nappa leather
ABRASION RESISTANCE: 30.000 kinks

COMPOSITION: cuir vachette Nappa
RÉSISTANCE À L'ABRASION: 30.000 plis

COMPOSIZIONE: Pelle bovina Nappa
RESISTENZA ALL' ABRASIONE: 30.000 Pieghe

SAMENSTELLING: Rund-Nappa Leder
SCHUURVASTHEID: 30.000 Nerven

СОСТАВ: тонко выделанная воловья кожа
СТОЙКОСТЬ К СТИРАНИЮ: 30.000 дефекты

BB0 – BB9

STOFFE | FABRICS



BB0



BB1



BB2



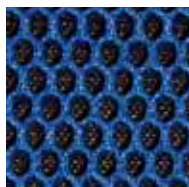
BB3



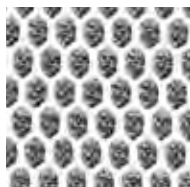
BB4



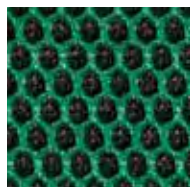
BB5



BB6



BB7



BB8



BB9

ZUSAMMENSETZUNG: 100% Polyester
 GEWICHT: 570 g pro lfd. Meter (+/- 5%)
 SCHEUERFESTIGKEIT: 40.000 Scheuertouren (Martindale)

COMPOSITION: 100% Polyester
 WEIGHT: 570 g per linear meter (+/- 5%)
 ABRASION RESISTANCE: 40.000 cycles (Martindale)

COMPOSITION: 100% polyester
 POIDS: 570 g par mètre courant (+/- 5%)
 RÉSISTANCE À L'ABRASION: 40.000 Tours (Martindale)

COMPOSIZIONE: 100% Poliestere
 PESO: 570 g / metri lineari (+/- 5%)
 RESISTENZA ALL' ABRASIONE: 40.000 cicli (Martindale)

SAMENSTELLING: 100% Polyester
 GEWICHT: 570 g per strekkende meter (+/- 5%)
 SCHUURVASTHEID: 40.000 Draaitouren (Martindale)

СОСТАВ: 100% полиэстер
 ВЕС: 570 г г.г пог.м. (+/- 5%)
 СТОЙКОСТЬ К СТИРАНИЮ: 40.000 удвоенных циклов

BC0 – BC6

STOFFE | FABRICS



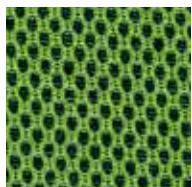
BC0



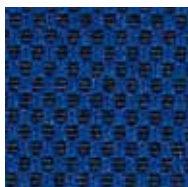
BC1



BC4



BC5



BC6



BC7

ZUSAMMENSETZUNG: 100% Polyester
GEWICHT: 250 g pro lfd. Meter (+/- 5%)
SCHEUERFESTIGKEIT: 20.000 Scheuertouren (Martindale)

COMPOSITION: 100% Polyester
WEIGHT: 250 g per linear meter (+/- 5%)
ABRASION RESISTANCE: 20.000 cycles (Martindale)

COMPOSITION: 100% polyester
POIDS: 250 g par mètre courant (+/- 5%)
RÉSISTANCE À L'ABRASION: 20.00 Tours (Martindale)

COMPOSIZIONE: 100% Poliestere
PESO: 250 g / metri lineari (+/- 5%)
RESISTENZA ALL' ABRASIONE: 20.000 cicli (Martindale)

SAMENSTELLING: 100% Polyester
GEWICHT: 250 g per strekkende meter (+/- 5%)
SCHUURVASTHEID: 20.000 Draaitoeren (Martindale)

СОСТАВ: 100% полиэстер
ВЕС: 250 г г.г пог.м. (+/- 5%)
СТОЙКОСТЬ К СТИРАНИЮ: 20.000 удвоенных циклов

BD3 – BD6

STOFFE | FABRICS



BD3



BD6

ZUSAMMENSETZUNG: 100% Polyester
GEWICHT: 250 g pro lfd. Meter (+/- 5%)
SCHEUERFESTIGKEIT: 20.000 Scheuertouren (Martindale)

COMPOSITION: 100% Polyester
WEIGHT: 250 g per linear meter (+/- 5%)
ABRASION RESISTANCE: 20.000 cycles (Martindale)

COMPOSITION: 100% polyester
POIDS: 250 g par mètre courant (+/- 5%)
RÉSISTANCE À L'ABRASION: 20.000 Tours (Martindale)

COMPOSIZIONE: 100% Poliestere
PESO: 250 g / metri lineari (+/- 5%)
RESISTENZA ALL' ABRASIONE: 20.000 cicli (Martindale)

SAMENSTELLING: 100% Polyester
GEWICHT: 250 g per strekkende meter (+/- 5%)
SCHUURVASTHEID: 20.000 Draaitoeren (Martindale)

СОСТАВ: 100% полиэстер
ВЕС: 250 г г.г пог.м. +/- 5%
СТОЙКОСТЬ К СТИРАНИЮ: 20.000 удвоенных циклов

B10 – B18

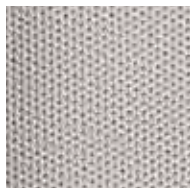
STOFFE | FABRICS



B10



B11



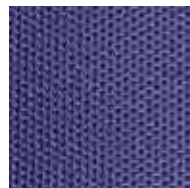
B13



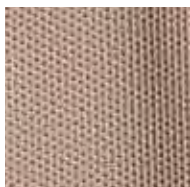
B14



B15



B16



B17



B18

ZUSAMMENSETZUNG: 100% Polyester
 GEWICHT: 117 g pro lfd. Meter (+/- 5%)
 SCHEUERFESTIGKEIT: 50.000 Scheuertouren (Martindale)

COMPOSITION: 100% Polyester
 WEIGHT: 117 g per linear meter (+/- 5%)
 ABRASION RESISTANCE: 50.000 cycles (Martindale)

COMPOSITION: 100% polyester
 POIDS: 117 g par mètre courant (+/- 5%)
 RÉSISTANCE À L'ABRASION: 50.00 Tours (Martindale)

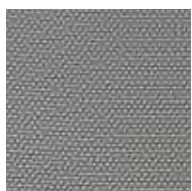
COMPOSIZIONE: 100% Poliestere
 PESO: 117 g / metri lineari (+/- 5%)
 RESISTENZA ALL' ABRASIONE: 50.000 cicli (Martindale)

SAMENSTELLING: 100% Polyester
 GEWICHT: 117 g per strekkende meter (+/- 5%)
 SCHUURVASTHEID: 50.000 Draaitouren (Martindale)

СОСТАВ: 100% полиэстер
 ВЕС: 117 г г.г пог.м. (+/- 5%)
 СТОЙКОСТЬ К СТИРАНИЮ: 50.000 удвоенных циклов

BK3 – BK6

STOFFE | FABRICS



BK3



BK4



BK5



BK6

ZUSAMMENSETZUNG: 100% Polyester
SCHEUERFESTIGKEIT: 40.000 Scheuertouren (Martindale)

COMPOSITION: 100% Polyester
ABRASION RESISTANCE: 40.000 cycles (Martindale)

COMPOSITION: 100% polyester
RÉSISTANCE À L'ABRASION: 40.000 Tours (Martindale)

COMPOSIZIONE: 100% Poliestere
RESISTENZA ALL' ABRASIONE: 40.000 cicli (Martindale)

SAMENSTELLING: 100% Polyester
SCHUURVASTHEID: 40.000 Draaitoeren (Martindale)

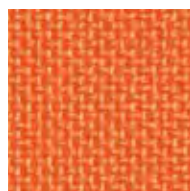
СОСТАВ: 100% полиэстер
СТОЙКОСТЬ К СТИРАНИЮ: 40.000 удвоенных циклов

G03 – G28

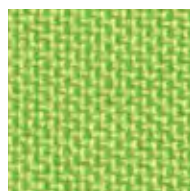
STOFFE | FABRICS



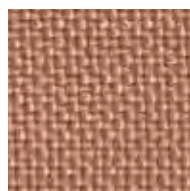
G03



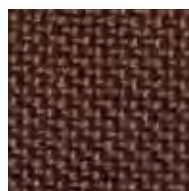
G04



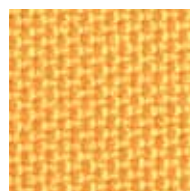
G05



G07



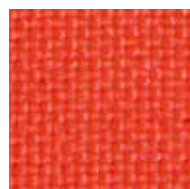
G08



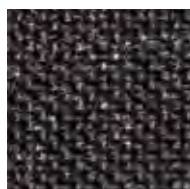
G09



G20



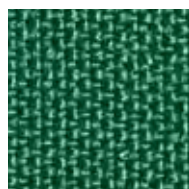
G21



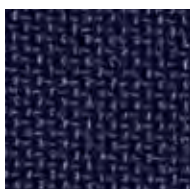
G22



G23



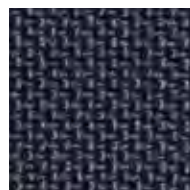
G25



G26



G27



G28

ZUSAMMENSETZUNG: 100% Polypropylen
 GEWICHT: 330 g pro lfd. Meter (+/- 5%)
 SCHEUERFESTIGKEIT: 40.000 +/- 5.000 Scheuertouren (Martindale)

COMPOSITION: 100% Polypropylène
 WEIGHT: 330 g per linear meter (+/- 5%)
 ABRASION RESISTANCE: 40.000 +/- 5.000 cycles (Martindale)

COMPOSITION: 100% polypropylène
 POIDS: 330 g par mètre courant (+/- 5%)
 RÉSISTANCE À L'ABRASION: 40.000 +/- 5.000 Tours (Martindale)

COMPOSIZIONE: 100% Polipropilene
 PESO: 330 g / metri lineari (+/- 5%)
 RESISTENZA ALL' ABRASIONE: 40.000 +/- 5.000 cicli (Martindale)

SAMENSTELLING: 100% Polypropheen
 GEWICHT: 330 g per strekkende meter (+/- 5%)
 SCHUURVASTHEID: 40.000 +/- 5.000 Draaitoeren (Martindale)

СОСТАВ: 100% полипропилен
 ВЕС: 330 г г.г пог.м. (+/- 5%)
 СТОЙКОСТЬ К СТИРАНИЮ: 40.000 +/- 5.000 удвоенных циклов

K86 – K87

STOFFE | FABRICS

85



K86



K87

ZUSAMMENSETZUNG: 100% Polyester
GEWICHT: 420 g pro lfd. Meter (+/- 5%)
SCHEUERFESTIGKEIT: 27.000 Scheuertouren (Martindale)

COMPOSITION: 100% Polyester
WEIGHT: 420 g per linear meter (+/- 5%)
ABRASION RESISTANCE: 27.000 cycles (Martindale)

COMPOSITION: 100% polyester
POIDS: 420 g par mètre courant (+/- 5%)
RÉSISTANCE À L'ABRASION: 27.000 Tours (Martindale)

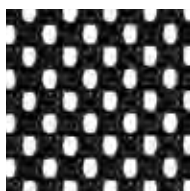
COMPOSIZIONE: 100% Poliestere
PESO: 420 g / metri lineari (+/- 5%)
RESISTENZA ALL' ABRASIONE: 27.000 cicli (Martindale)

SAMENSTELLING: 100% Polyester
GEWICHT: 420 g per strekkende meter (+/- 5%)
SCHUURVASTHEID: 27.000 Draaitoeren (Martindale)

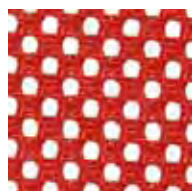
СОСТАВ: 100% полиэстер
ВЕС: 420 г г.г пог.м. (+/- 5%)
СТОЙКОСТЬ К СТИРАНИЮ: 27.000 удвоенных циклов

NETZ B

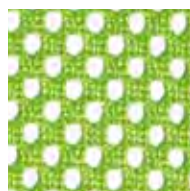
STOFFE | FABRICS



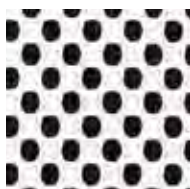
B90



B91



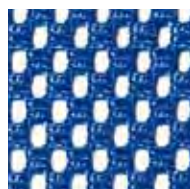
B92



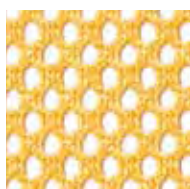
B93



B94



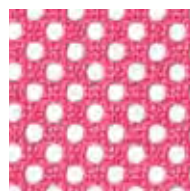
B98



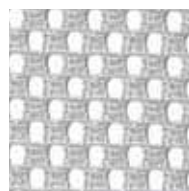
B99

NETZ BG

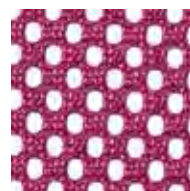
STOFFE | FABRICS



BG1



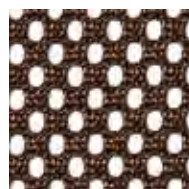
BG2



BG3



BG4



BG8

ZUSAMMENSETZUNG: 100% Polypropylen
 GEWICHT: 490 g pro lfd. Meter (+/- 5%)
 SCHEUERFESTIGKEIT: 50.000 Scheuertouren (Martindale)

COMPOSITION: 100% Polypropylene
 WEIGHT: 490 g per linear meter (+/- 5%)
 ABRASION RESISTANCE: 50.000 cycles (Martindale)

COMPOSITION: 100% polypropylène
 POIDS: 490 g par mètre courant (+/- 5%)
 RÉSISTANCE À L'ABRASION: 50.00 Tours (Martindale)

COMPOSIZIONE: 100% Polipropilene
 PESO: 490 g / metri lineari (+/- 5%)
 RESISTENZA ALL' ABRASIONE: 50.000 cicli (Martindale)

SAMENSTELLING: 100% Polypropyleen
 GEWICHT: 490 g per strekkende meter (+/- 5%)
 SCHUURVASTHEID: 50.000 Draaitoeren (Martindale)

СОСТАВ: 100% полипропилен
 ВЕС: 490 г г.г пог.м. (+/- 5%)
 СТОЙКОСТЬ К СТИРАНИЮ: 50.000 удвоенных циклов

ZUSAMMENSETZUNG: 100% Polypropylen
 GEWICHT: 490 g pro lfd. Meter (+/- 5%)
 SCHEUERFESTIGKEIT: 50.000 Scheuertouren (Martindale)

COMPOSITION: 100% Polypropylene
 WEIGHT: 490 g per linear meter (+/- 5%)
 ABRASION RESISTANCE: 50.000 cycles (Martindale)

COMPOSITION: 100% polypropylène
 POIDS: 490 g par mètre courant (+/- 5%)
 RÉSISTANCE À L'ABRASION: 50.00 Tours (Martindale)

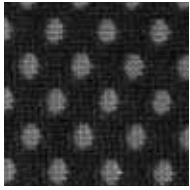
COMPOSIZIONE: 100% Polipropilene
 PESO: 490 g / metri lineari (+/- 5%)
 RESISTENZA ALL' ABRASIONE: 50.000 cicli (Martindale)

SAMENSTELLING: 100% Polypropyleen
 GEWICHT: 490 g per strekkende meter (+/- 5%)
 SCHUURVASTHEID: 50.000 Draaitoeren (Martindale)

СОСТАВ: 100% полипропилен
 ВЕС: 490 г г.г пог.м. (+/- 5%)
 СТОЙКОСТЬ К СТИРАНИЮ: 50.000 удвоенных циклов

NETZ BR

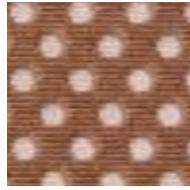
STOFFE | FABRICS



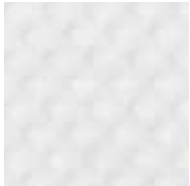
BR0



BR1



BR2



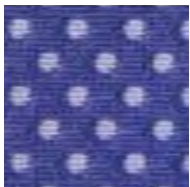
BR3



BR4



BR5



BR6



BR7



BR8



BR9

ZUSAMMENSETZUNG: 100% Polypropylen
 GEWICHT: 490 g pro lfd. Meter (+/- 5%)
 SCHEUERFESTIGKEIT: 50.000 Scheuertouren (Martindale)

COMPOSITION: 100% Polypropylene
 WEIGHT: 490 g per linear meter (+/- 5%)
 ABRASION RESISTANCE: 50.000 cycles (Martindale)

COMPOSITION: 100% polypropylène
 POIDS: 490 g par mètre courant (+/- 5%)
 RÉSISTANCE À L'ABRASION: 50.00 Tours (Martindale)

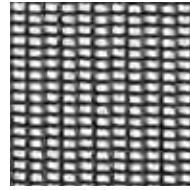
COMPOSIZIONE: 100% Polipropilene
 PESO: 490 g / metri lineari (+/- 5%)
 RESISTENZA ALL' ABRASIONE: 50.000 cicli (Martindale)

SAMENSTELLING: 100% Polypropyleen
 GEWICHT: 490 g per strekkende meter (+/- 5%)
 SCHUURVASTHEID: 50.000 Draaitoeren (Martindale)

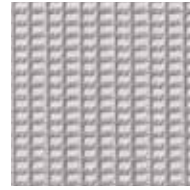
СОСТАВ: 100% полипропилен
 ВЕС: 490 г г.г пог.м. (+/- 5%)
 СТОЙКОСТЬ К СТИРАНИЮ: 50.000 удвоенных циклов

NETZ G

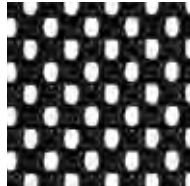
STOFFE | FABRICS



G80



G83



G90

ZUSAMMENSETZUNG: 100% Polypropylen
 GEWICHT: 490 g pro lfd. Meter (+/- 5%)
 SCHEUERFESTIGKEIT: 50.000 Scheuertouren (Martindale)

COMPOSITION: 100% Polypropylene
 WEIGHT: 490 g per linear meter (+/- 5%)
 ABRASION RESISTANCE: 50.000 cycles (Martindale)

COMPOSITION: 100% polypropylène
 POIDS: 490 g par mètre courant (+/- 5%)
 RÉSISTANCE À L'ABRASION: 50.00 Tours (Martindale)

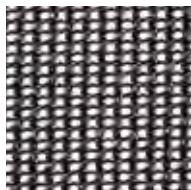
COMPOSIZIONE: 100% Polipropilene
 PESO: 490 g / metri lineari (+/- 5%)
 RESISTENZA ALL' ABRASIONE: 50.000 cicli (Martindale)

SAMENSTELLING: 100% Polypropyleen
 GEWICHT: 490 g per strekkende meter (+/- 5%)
 SCHUURVASTHEID: 50.000 Draaitoeren (Martindale)

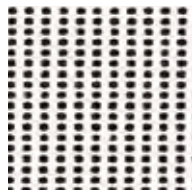
СОСТАВ: 100% полипропилен
 ВЕС: 490 г г.г пог.м. (+/- 5%)
 СТОЙКОСТЬ К СТИРАНИЮ: 50.000 удвоенных циклов

NETZ BH

STOFFE | FABRICS



BH0



BH3

ZUSAMMENSETZUNG: 100% Polypropylen
 GEWICHT: 490 g pro lfd. Meter (+/- 5%)
 SCHEUERFESTIGKEIT: 50.000 Scheuertouren (Martindale)

COMPOSITION: 100% Polypropylene
 WEIGHT: 490 g per linear meter (+/- 5%)
 ABRASION RESISTANCE: 50.000 cycles (Martindale)

COMPOSITION: 100% polypropylène
 POIDS: 490 g par mètre courant (+/- 5%)
 RÉSISTANCE À L'ABRASION: 50.00 Tours (Martindale)

COMPOSIZIONE: 100% Polipropilene
 PESO: 490 g / metri lineari (+/- 5%)
 RESISTENZA ALL' ABRASIONE: 50.000 cicli (Martindale)

SAMENSTELLING: 100% Polypropyleen
 GEWICHT: 490 g per strekkende meter (+/- 5%)
 SCHUURVASTHEID: 50.000 Draaitouren (Martindale)

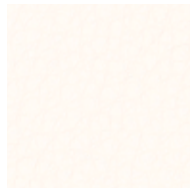
СОСТАВ: 100% полипропилен
 ВЕС: 490 г г.г пог.м. (+/- 5%)
 СТОЙКОСТЬ К СТИРАНИЮ: 50.000 удвоенных циклов

S01 – S19

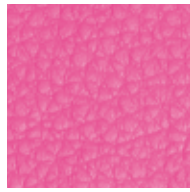
STOFFE | FABRICS



S01



S03



S04



S05



S07



S08



S10



S11



S12



S13



S14



S15



S16



S18



S19

ZUSAMMENSETZUNG: 80% Baumwolle, 20% Polyurethan
GEWICHT: 580 g pro lfd. Meter (+/- 5%)
SCHEUERFESTIGKEIT: 100.000 Scheuertouren (Martindale)

COMPOSITION: 80% Cotton, 20% Polyurethane
WEIGHT: 580 g per linear meter (+/- 5%)
ABRASION RESISTANCE: 100.000 cycles (Martindale)

COMPOSITION: 80% coton, 20% polyuréthane
POIDS: 580 g par mètre courant (+/- 5%)
RÉSISTANCE À L'ABRASION: 100.000 Tours (Martindale)

COMPOSIZIONE: 80% Cotone, 20% Poliuretano
PESO: 580 g / metri lineari (+/- 5%)
RESISTENZA ALL' ABRASIONE: 100.000 cicli (Martindale)

SAMENSTELLING: 80% Katoen, 20% Polyurethaan
GEWICHT: 580 g per strekkende meter (+/- 5%)
SCHUURVASTHEID: 100.000 Draaitoeren (Martindale)

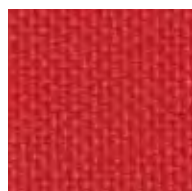
СОСТАВ: 80% хлопок, 20% полиуретан
ВЕС: 580 г г.г пог.м. (+/- 5%)
СТОЙКОСТЬ К СТИРАНИЮ: 100.000 удвоенных циклов

T20 – T39

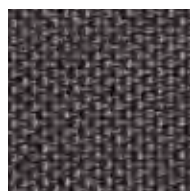
STOFFE | FABRICS



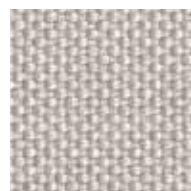
T20



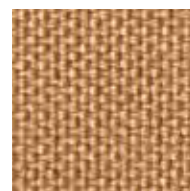
T21



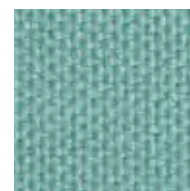
T22



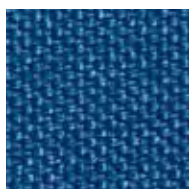
T23



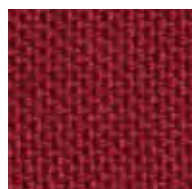
T24



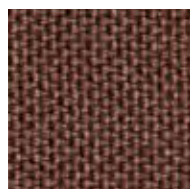
T25



T26



T27



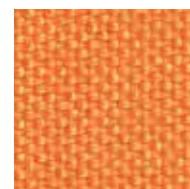
T28



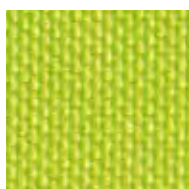
T31



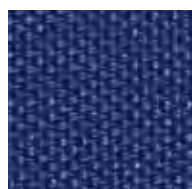
T33



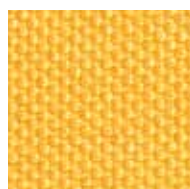
T34



T35



T38



T39

ZUSAMMENSETZUNG: 100% PL FR TREVIRA CS
 GEWICHT: 440 g pro lfd. Meter (+/- 5%)
 SCHEUERFESTIGKEIT: 55.000 +/- 5.000 Scheuertouren (Martindale)

COMPOSITION: 100% PL FR TREVIRA CS
 WEIGHT: 440 g per linear meter (+/- 5%)
 ABRASION RESISTANCE: 55.000 +/- 5.000 cycles (Martindale)

COMPOSITION: 100% PL FR TREVIRA CS
 POIDS: 440 g par mètre courant (+/- 5%)
 RÉSISTANCE À L'ABRASION: 55.000 +/- 5.000 Tours (Martindale)

COMPOSIZIONE: 100% PL FR TREVIRA CS
 PESO: 440 g / metri lineari (+/- 5%)
 RESISTENZA ALL' ABRASIONE: 55.000 +/- 5.000 cicli (Martindale)

SAMENSTELLING: 100% PL FR TREVIRA CS
 GEWICHT: 440 g per strekkende meter (+/- 5%)
 SCHUURVASTHEID: 55.000 +/- 5.000 Draaitoeren (Martindale)

СОСТАВ: 100% PL FR TREVIRA CS
 ВЕС: 440 г г.г пог.м. (+/- 5%)
 СТОЙКОСТЬ К СТИРАНИЮ: 55.000 +/- 5.000 удвоенных циклов

W50 – W77

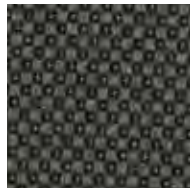
STOFFE | FABRICS



W50



W51



W52



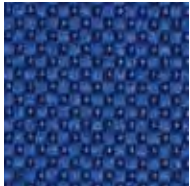
W53



W54



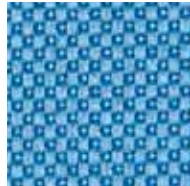
W55



W56



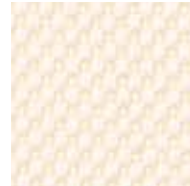
W57



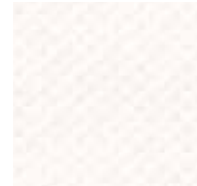
W58



W59



W72



W73



W75



W77

ZUSAMMENSETZUNG: 100% Polyester
GEWICHT: 560 g pro lfd. Meter (+/- 5%)
SCHEUERFESTIGKEIT: 50.000 Scheuertouren (Martindale)

COMPOSITION: 100% Polyester
WEIGHT: 560 g per linear meter (+/- 5%)
ABRASION RESISTANCE: 50.000 cycles (Martindale)

COMPOSITION: 100% polyester
POIDS: 560 g par mètre courant (+/- 5%)
RÉSISTANCE À L'ABRASION: 50.000 Tours (Martindale)

COMPOSIZIONE: 100% Poliestere
PESO: 560 g / metri lineari (+/- 5%)
RESISTENZA ALL' ABRASIONE: 50.000 cicli (Martindale)

SAMENSTELLING: 100% Polyester
GEWICHT: 560 g per strekkende meter (+/- 5%)
SCHUURVASTHEID: 50.000 Draaitoeren (Martindale)

СОСТАВ: 100% полиэстер
ВЕС: 560 г г.г пог.м. (+/- 5%)
СТОЙКОСТЬ К СТИРАНИЮ: 50.000 удвоенных циклов

Thank you for evaluating Wondershare PDF Splitter.

A watermark is added at the end of each output PDF file.

To remove the watermark, you need to purchase the software from

<http://store.wondershare.com/shop/buy/buy-pdf-splitter.html>